

R259DS



Energy
Management

Ball valve for water for heating systems, standard port

Datasheet
0596EN  11/2022



Ball valve, female-tail piece male threaded connections, with drain cock with hose connection \varnothing 9 mm. Standard port.

Versions and product codes

PRODUCT CODE	CONNECTIONS	DRAIN COCK SIZE	FINISHING	HANDLE TYPE	HANDLE COLOR	NOTES
R259SX003	G 1/2"F x G 1/2"M	1/4"	Chrome plated brass	T-handle	Red	With drain cock
R259SX004	G 1/2"F x G 3/4"M	1/4"	Chrome plated brass	T-handle	Red	With drain cock
R259SX005	G 3/4"F x G 3/4"M	1/4"	Chrome plated brass	T-handle	Red	With drain cock
R259SX006	G 3/4"F x G 1"M	1/4"	Chrome plated brass	T-handle	Red	With drain cock
R259SX007	G 1"F x G 1"M	1/4"	Chrome plated brass	T-handle	Red	With drain cock
R259SX008	G 1"F x G 1-1/4"M	1/4"	Chrome plated brass	T-handle	Red	With drain cock
R259SX009	G 1-1/4"F x G 1-1/4"M	3/8"	Chrome plated brass	T-handle	Red	With drain cock

Technical data

Main features and materials

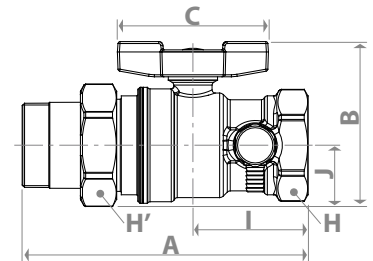
- Suitable for water for heating/cooling systems
- Standard port
- Valve made of UNI EN 12165 CW617N chrome plated brass
- Stem with double O-Ring
- Nut with anti-corrosion coating, with guarantee seal and hologram
- Aluminium T-handle, red painted
- Drain cock with hose connection \varnothing 9 mm

Field of applications

- Temperature range: $-20 \div 120$ °C (-20 °C with 50 % glycol solutions)
- Max. working pressure at 20 °C with water:
4,2 MPa (42 bar) for 1/2" F, 3/4" F
3,5 MPa (35 bar) for 1" F, 1 1/4" F

Dimensions and Kv

PRODUCT CODE	DN	A [mm]	I [mm]	B [mm]	J [mm]	C [mm]	H [mm]	H' [mm]	Kv
R259SX003	14	91	32	53	17	63	wr.25	wr.30	10,2
R259SX004	14	93	32	57	21	63	wr.25	wr.38	10,2
R259SX005	18	102	37	63	21	73	wr.32	wr.38	18,5
R259SX006	18	107	37	67	26	73	wr.32	wr.46	18,5
R259SX007	22	116	53	72	26	73	wr.39	wr.46	36,3
R259SX008	22	120	53	76	30	73	wr.39	wr.53	36,3
R259SX009	28	138	56	80	30	73	wr.48	wr.53	73,5



Product specifications

R259DS

Ball valve, with female-tail piece male threaded connections. Suitable for water for heating/cooling systems. Valve made of UNI EN 12165 CW617N chrome plated brass. Standard port. Aluminium T-handle, red or blue painted. Stem with double O-Ring. Nut with anti-corrosion coating, with guarantee seal and hologram. Drain cock with hose connection \varnothing 9 mm. Temperature range: $-20 \div 120$ °C (-20 °C with 50 % glycol solutions). Max. working pressure at 20 °C with water: 4,2 MPa (42 bar) for 1/2" F, 3/4" F; 3,5 MPa (35 bar) for 1" F, 1-1/4" F.

⚠ Safety Warning. Installation, commissioning and periodical maintenance of the product must be carried out by qualified operators in compliance with national regulations and/or local standards. A qualified installer must take all required measures, including use of Individual Protection Devices, for his and others' safety. An improper installation may damage people, animals or objects towards which Giacomini S.p.A. may not be held liable.

♻ Package Disposal. Carton boxes: paper recycling. Plastic bags and bubble wrap: plastic recycling.

ℹ Additional information. For more information, go to giacomini.com or contact our technical assistance service. This document provides only general indications. Giacomini S.p.A. may change at any time, without notice and for technical or commercial reasons, the items included herewith. The information included in this technical sheet do not exempt the user from strictly complying with the rules and good practice standards in force.

♻ Product Disposal. Do not dispose of product as municipal waste at the end of its life cycle. Dispose of product at a special recycling platform managed by local authorities or at retailers providing this type of service.